

# WORKSHOPS WITH TERRY BOUTON



[www.terrybouton.com](http://www.terrybouton.com)

**Venue: Bentleg Market 36 Skinner St, South Grafton**

**For Bookings 0411 274 054**

**Secrets of Ceramic Portraiture 9.30-3.30 Sat 10th November**

**\$120.00**

Learn how to make a realistic clay portrait.

Learn how to make simple tools and equipment for clay modelling and portrait making.

Be introduced to a step by step procedure from beginning to end in sculpting a realistic portrait.

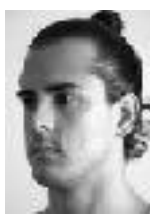
(Due to time constraints if you don't complete your portrait you can complete it in your own time.)

The cost does not include firing however firing options will be suggested.

Included in the workshop fee is clay, use of specialised tools, banding wheels and armatures, some materials to make some simple tools, worksheets and tea and coffee.

If you wish you can bring your own black and white 1/2 life size photocopies of photographs from various angles as displayed. (keeping length from top hairline to chin equivalent in each image)

Bring your camera, lunch and a container and a large sturdy bags for wrapping your sculpture.  
Suitable for any level of student.



**Painting the Portrait 9.30-3.30**

**Sat 24th November**

**\$120.00**

Learn some secrets of painting a realistic portrait from life.

The morning will begin with using ourselves as models to create a series of parts of the face. We will discuss shape, colour, form, brushwork, value and edges.

I will discuss many aspects of portraiture including proportion and lighting for your own practise at home/studio.

The afternoon will include painting a model over a period of 6 X 25 minute sessions.

Bring your own (oil or acrylic : no strong solvents!!!) paints and primed board/ canvas (approx.25cm X 20 ) and your own lunch.

Model costs and easels are provided.

Suitable for all levels.



**Experimental Creation and mentoring : 9.30-12.30 Saturdays in January begin 12th \$50.00**

Work through the experimental creative process using a variety of media.

Be introduced to some new materials and methods.

Play is an important part of the process in creating an artwork whether 2D or 3D.

Using your own theme create a series of small works in an endeavour to stretch and engage the brain, delight the senses and walk away re-energised with new ideas.

AND/OR be mentored in your own projects. This workshop will continue if there are enough interested students.

All materials (paper, charcoal, papers, clay etc etc.) are included but no firing of clay.

Bring your diary and camera to record the events. Bring your own lunch for energy.

Suitable for beginners and intermediate.



**Modelling and Casting a Portrait Medallion 9.30-3.30 Saturday 1st of December \$110**

Be introduced to the secrets of making a realistic profile portrait in clay.

Bring a series of 1/3 life-sized photocopied pictures of your model (or select from mine).

From these you will model a portrait model in clay.

In the afternoon you will learn how to make a cast of your medallion and from this cast learn how to reproduce copies of your medallion.

You need to bring images of your subject in a particular format (see suggestions below-it could be a family member or someone you admire-Michael Jackson etc.... ) OR I can supply

All materials are included (clay and clay tools, plaster and plaster tools) . Please bring a number of large ice cream containers for mixing plaster and a box and plastic to take your work home.

Bring your lunch to keep your energy levels.

The cost does not include firing however firing options will be suggested.



